



## **IBHRE to Launch New Continuous Competency Model**

In response to the changing certification and recertification environment and in line with other certification organizations, IBHRE is transitioning to a new continuous competency program. This program is called IBHRE-C3 and is expected to commence in 2022.

The goal of the IBHRE-C3 program is to allow for maintenance of relevant, contemporary education on a real time basis in keeping with current and changing patterns of medical knowledge. Subject to final approval by the Board of Directors, the IBHRE-C3 program will involve reading a selection of recommended literature from a group of contemporary and relevant sources identified by IBHRE over ongoing two (2) year cycles.

After reading recommended literature, the individual will be required to successfully complete an online assessment prepared by IBHRE. The number of questions will vary based on the size of the papers or articles. Maintenance of certification will be based on the quantity of questions answered as compared to the number of articles/papers read. If certification is not maintained via IBHRE-C3, then certification will lapse, and the candidate will need to take the certification exam again.

All new certification applicants beginning with the October 2021 examinees will be required to participate in IBHRE-C3. Individuals certified prior to that date will be phased into IBHRE-C3.

A more complete description of the IBHRE-C3 program and details regarding the IBHRE-C3 process (including pricing structure) will be made available on IBHRE's website Fall 2021.

For more information, contact Reza Lustig, IBHRE's Certification Coordinator, at [rlustig@hrsonline.org](mailto:rlustig@hrsonline.org); subject line should read: IBHRE-C3.

7.19.2021

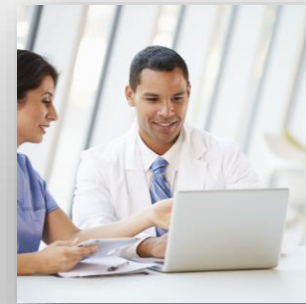
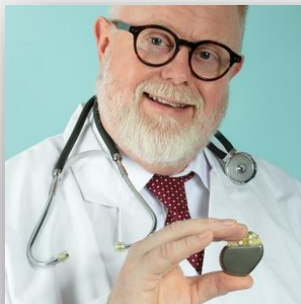
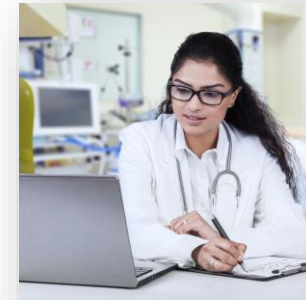
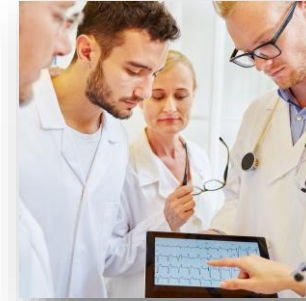
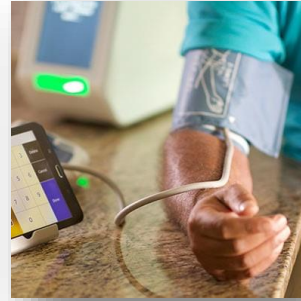


# **CHANGES TO IBHRE RECERTIFICATION: AN OVERVIEW OF IBHRE-C3**

---

July 2021

# Continuous competency in IBHRE certification



## IBHRE-C3 GOAL

---

To allow for maintenance of relevant, contemporary education on a real time basis in keeping with current and changing patterns in medical knowledge

NOTE: Final processes are subject to approval by the IBHRE Board of Directors.



## IBHRE-C3 FORMAT

---

- Two-year cycles
- Literature
- Assessments
- Feedback

NOTE: IBHRE-C3 will be phased in for individuals currently certified. Newly certified individuals beginning October 2021 will participate in IBHRE-C3.



# IBHRE-C3

---

Credentials include:

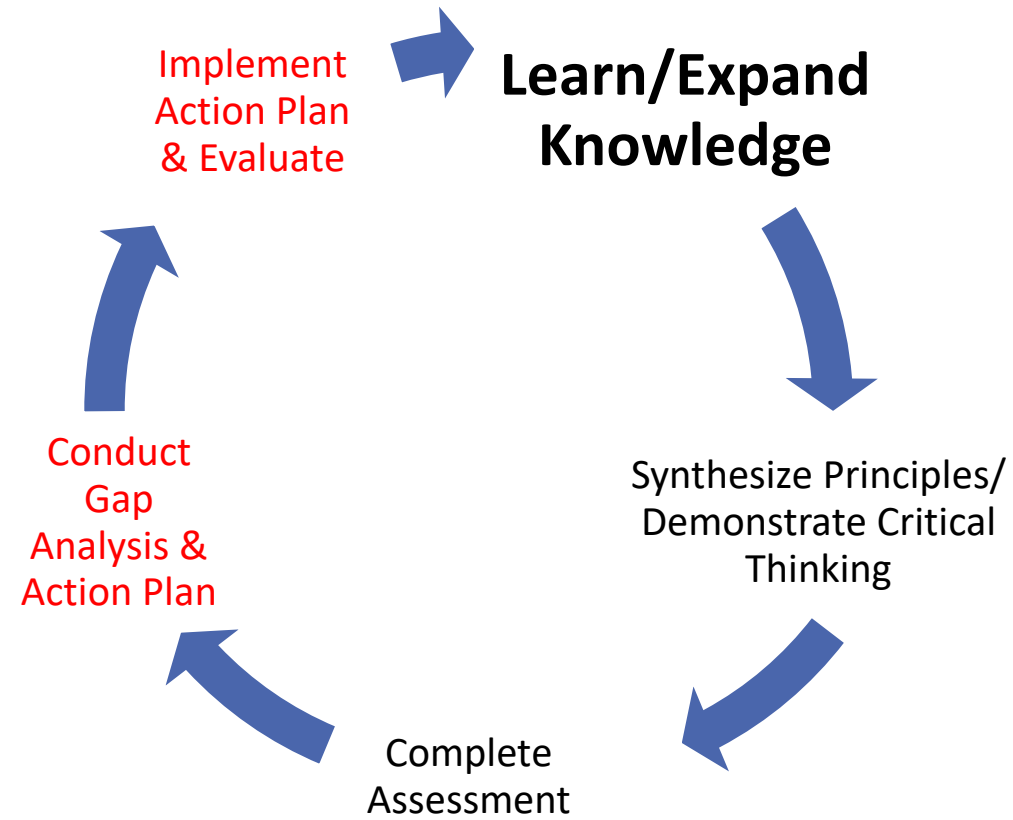
- Certified Cardiac Device Specialist (CCDS)
- Certified Electrophysiology Specialist (CEPS)
- Certified Electrophysiology Specialist – Adult (CEPS-A)
- Certified Electrophysiology Specialist – Pediatric (CEPS-P)
- Cardiac Device Remote Monitoring Specialist (CDRMS)



# BENEFITS OF IBHRE-C3

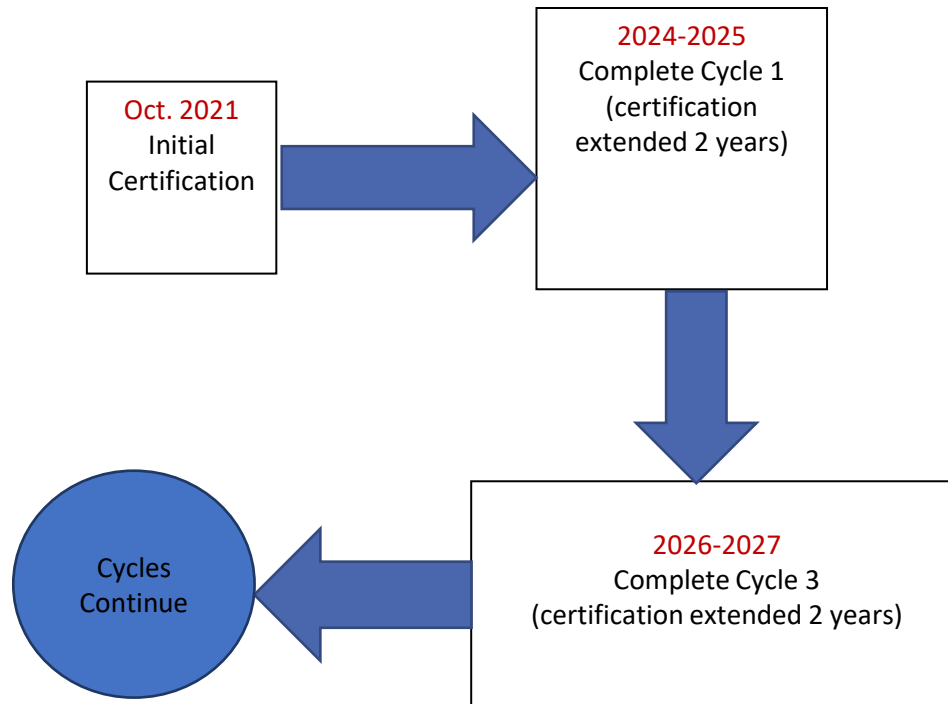
- Integration of learning and assessments
- Immediate feedback
- Customized learning
- Convenient
- Relevant information
- Literature supports IBHRE job task analyses and certification domains
- Affordable

# IBHRE-C3 CYCLE





# IBHRE-C3: INITIAL CERTIFICATION





FOR INFORMATION, VISIT  
IBHRE'S WEBSITE:

---

[www.ibhre.org](http://www.ibhre.org)