

The Electrophysiology (EP) Workforce



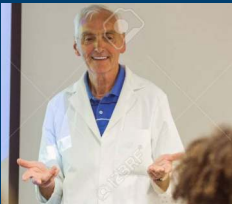
CLINICAL STAFF

Work Environment

- Clinical Setting
- Direct Patient Care
- Single or Multiple Work Sites
- Remote Follow-Up

Occupational Benefits

- On-Call Opportunities
- Management / Director Opportunities
- Moderate to High Income



EDUCATOR

Work Environment

- Academic Settings
- Work with Students
- Limited Patient Care

Occupational Benefits

- No call
- Educational Benefits & Schedule
- Moderate Income



INDUSTRY REPRESENTATIVE

Work Environment

- Professional Setting
- Work with Client Staff
- Direct and Indirect Patient Care
- Multiple Work Sites
- Access to Industry-Level Training

Occupational Benefits

- Exposure to industry operations & function
- Travel, various sites
- Moderate to High income



BUSINESS DEVELOPMENT

Work Environment

- Professional Setting
- Work with Clinical and Non-Clinical Staff
- No Direct Patient Care
- Multiple Work Sites

Occupational Benefits

- Business Networking Opportunities
- Moderate to High Income

About the International Board of Heart Rhythm Examiners

IBHRE has set the standard for global certification in heart rhythm management and recognizes cardiac care professionals who are skilled in this unique specialty. By earning IBHRE certification, heart rhythm professionals have demonstrated professional excellence in the specialty is established. These specialists make up more than 10,000 physicians and allied professionals worldwide and have earned one or more of the following credentials:

- Certified Cardiac Device Specialist (CCDS)
- Certified Cardiac Device Specialist – Japan Device Representative (CCDS-JDR)
- Certified Electrophysiology Specialist (CEPS)
- Certified Electrophysiology Specialist – Adult (CEPS-A)
- Certified Electrophysiology Specialist – Pediatric (CEPS-P)
- Cardiac Device Remote Monitoring Specialist (CDRMS)



About Cardiovascular Credentialing International

Since 1968, Cardiovascular Credentialing International has administered credentialing examinations to cardiovascular professionals, including nurses, allied health professionals and technologists. CCI's credentialing programs demonstrate specialized knowledge and skills necessary for various cardiovascular specialties. The globally recognized agency administers competency-based exams for nine credentials:

- Advanced Cardiac Sonographer (ACS)
- Certified Cardiographic Technician (CCT)
- Certified Rhythm Analysis Technician (CRAT)
- Registered Congenital Cardiac Sonographer (RCCS)
- Registered Cardiac Electrophysiology Specialist (RCES)
- Registered Cardiovascular Invasive Specialist (RCIS)
- Registered Cardiac Sonographer (RCS)
- Registered Phlebology Sonographer (RPhS)
- Registered Vascular Specialist (RVS)



THE EP PROFESSIONAL CONTINUUM
Your Certification Pathway



The International Board of Heart Rhythm Examiners (IBHRE) and Cardiovascular Credentialing International (CCI) recognize the value of credentialing in the cardiovascular profession. Consequently, the global credentialing organizations have partnered to establish the EP Professional Continuum, which outlines the pathway for EP professionals to achieve the highest level of credentialing.

The EP Professional Continuum guides you through professional growth and career advancement by:

- Recognizing your qualifications for practice in your specialty area;
- Helping you meet requirements for clinical and/or industry employment; and
- Validating your knowledge and competence to employers, patients, and physicians.

Resources for EP Professionals

IBHRE Resources

- Cardiac Device Online Course – Cardiac Device Education and Self-Assessment Course
- EP Online Course – The EP Learning ExPerience
- Mentorship Program for device and EP credential preparation
- Heart Rhythm Society (HRSOnline.org)

IBHRE.org/exam-resources

CCI Resources

- CCI-Online.org/RCES
- CCI-Online.org/RCIS
- RCIS – Self Assessment Exam
- RCES – Self Assessment Exam

CCI-Online.org/EPCertification

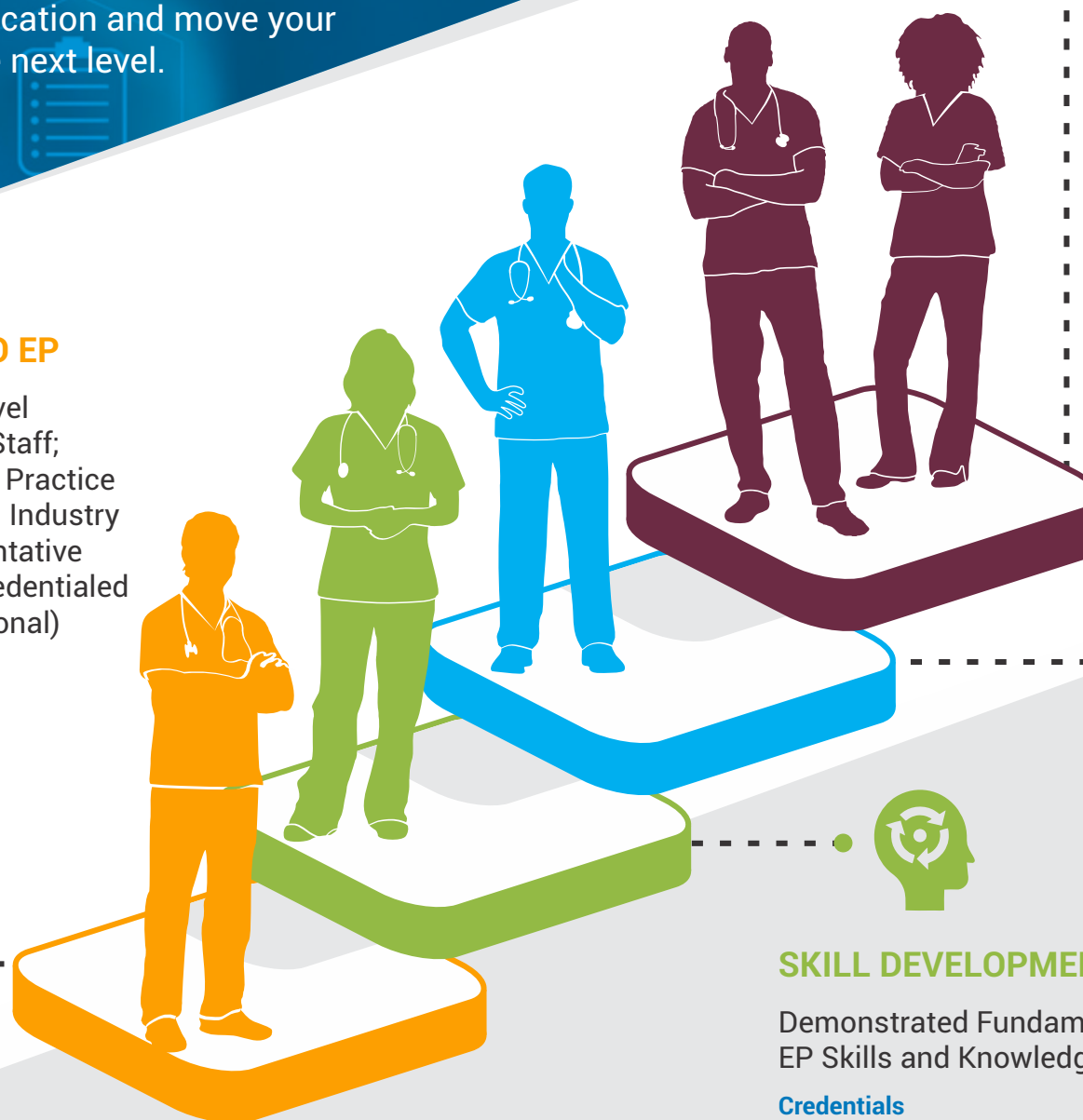
Cardiac Electrophysiology (EP) Continuum

Leverage your entry or standard level RCES or RCIS credential to earn an IBHRE certification and move your career to the next level.



NEW TO EP

Entry Level Clinical Staff; Advance Practice Provider; Industry Representative (Non-Credentialed Professional)



ADVANCED

Advanced Level of EP Skills and Knowledge Base

Credentials

Certified EP Specialist (CEPS) and/or Certified Cardiac Device Specialist (CCDS)



STANDARD

Intermediate Level of Competency in EP Skill and Knowledge Base

Credentials

Registered Cardiac EP Specialist (RCES) and/or Registered Cardiovascular Invasive Specialist (RCIS)



SKILL DEVELOPMENT

Demonstrated Fundamental and Functional EP Skills and Knowledge

Credentials

Registered Cardiac EP Specialist (RCES) and/or Registered Cardiovascular Invasive Specialist (RCIS)